



# 77-AR SERIES

## Full Port Bronze Ball Valve with Actuator Ready ISO Mounting Pad

<b>Job Name:</b>	<b>Contractor:</b>
<b>Job Location:</b>	<b>P.O. Number:</b>
<b>Engineer:</b>	<b>Representative:</b>
<b>Tag:</b>	<b>Wholesale Distributor:</b>

### DESCRIPTION

The Apollo® 77-AR Series is a full port ball valve with an actuator ready mounting pad.

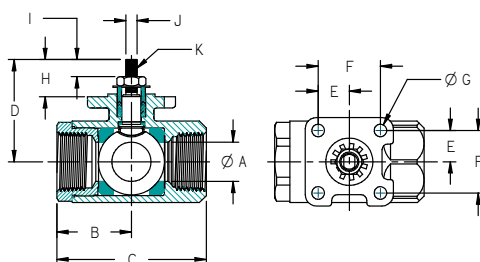
### FEATURES

- Multi-Piece Packing Set
- Blow-Out Proof Stem Design
- Adjustable Packing Gland
- Stainless Ball & Stem
- ISO 5211 Mounting Pad
- Live Loaded Packing

### PERFORMANCE RATING

- Maximum Pressure: 600 psi CWP, 250 psi SWP
- Maximum Temperature: 500°F
- Vacuum Service to 29 in. Hg

### DIMENSIONS



Model Number	Size (in.)	Dimensions										J (Flats)	K (Thrds) UNF	Wt. (lbs.)
		A	B	C	D	E	F	G	H	I				
77-AR1	1/4"	0.37	1.12	2.25	1.40	0.59	1.17	0.28	0.61	0.18		247/249	3/8-24	0.60
77-AR2	3/8"	0.37	1.12	2.25	1.40	0.59	1.17	0.28	0.61	0.18		247/249	3/8-24	0.57
77-AR3	1/2"	0.50	1.12	2.25	1.54	0.59	1.17	0.28	0.61	0.16		247/249	3/8-24	0.62
77-AR4	3/4"	0.86	1.68	3.12	2.28	0.70	1.39	0.28	0.84	0.26		247/249	3/8-24	1.76
77-AR5	1"	1.00	1.81	3.62	2.87	0.98	1.95	0.34	1.06	0.31		370/372	5/8-18	3.44
77-AR7	1 1/2"	1.50	2.37	4.75	3.37	0.98	1.95	0.34	1.16	0.20		370/372	5/8-18	6.25
77-AR8	2"	2.00	2.65	5.37	3.86	0.98	1.95	0.34	1.16	0.20		370/372	5/8-18	11.72

### OPTIONS & SIZES

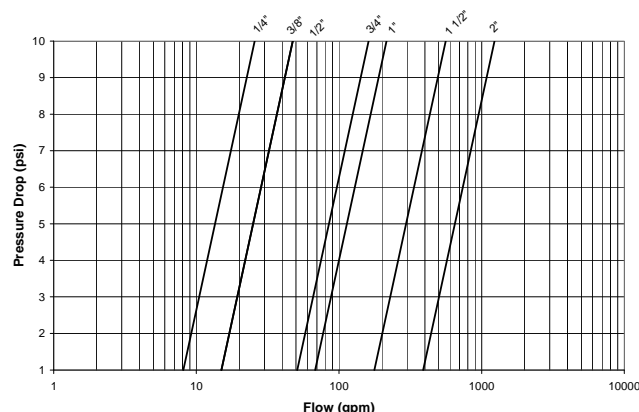
- |  |            |
|--|------------|
| <input type="checkbox"/> Vented Ball       | 1/4" to 2" |
| <input type="checkbox"/> Graphite Packing  | 1/4" to 2" |
| <input type="checkbox"/> Latch-Lock Handle | 1/4" to 2" |
| <input type="checkbox"/> PTFE Seats        | 1/4" to 2" |
| <input type="checkbox"/> Oxygen Cleaned    | 1/4" to 2" |



### STANDARD MATERIALS LIST

Part Name	Material
Stem Packing	MPTFE
Stem Bearing	RPTFE
Ball	ASTM 316 SS
Seat (2)	MPTFE
Retainer	B16 (1/4" to 1"), B584-C84400 (1 1/4" to 2")
Gland Nut	ASTM B16 Brass
Stem	ASTM 316 SS
Jam Nut	SS
Body Seal (1 1/2" to 2")	PTFE
Body	B584-C84400 Bronze
Belleville Washers	SS

### PRESSURE DROP vs. FLOW



### APPROVALS

- MSS SP-110; Ball Valves, Threaded, Socket-Welding, Solder Joint, Grooved and Flared Ends
- Federal Specification: WW-V-35C, Type: II, Composition: BZ, Style: 3
- CRN: OC10908.5C

Conbraco Industries, Inc. 701 Matthews Mint Hill Rd. Matthews NC 28106 USA; [www.apollovalves.com](http://www.apollovalves.com) ; 704-841-6000

This specification is provided for reference only. Conbraco reserves the right to change any portion of this specification without notice and without incurring obligation to make such changes to Conbraco products previously or subsequently sold.